

FPG Air Cleaner



Small, Durable and Corrosion-Free The World's Easiest-To-Service Air Cleaner!

Applications

- Provides up to 346 cfm airflow per air cleaner – double throughput by using two units
- Installation can be horizontal, vertical, or even at an angle (as long as Vacuator™ Valve points down)
- 4", 5", 6", 7", 8", 9" & 10" diameter sizes
- Temperature tolerance: 180°F / 83°C sustained
(Do not install next to turbocharger, muffler, exhaust pipes, or other high-temp component.)

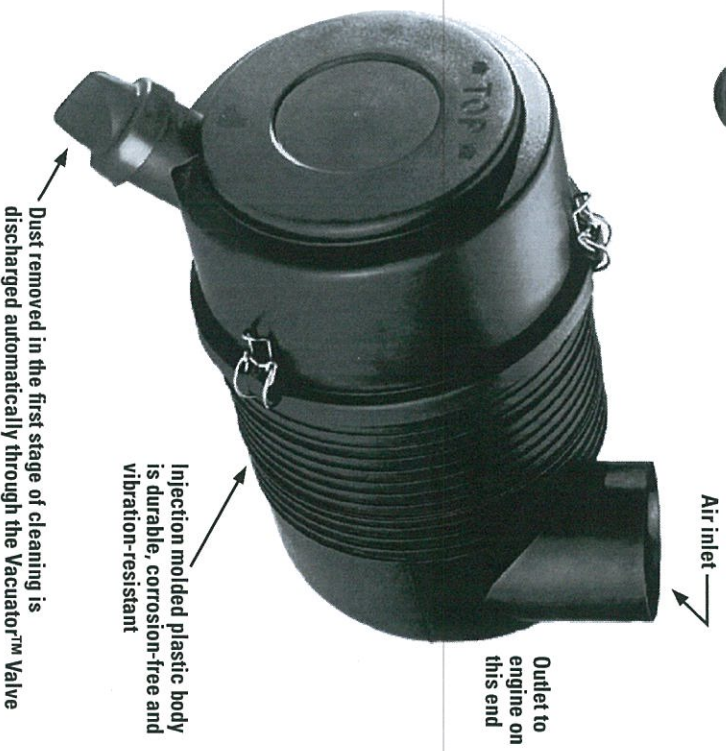


Ideal for

- Compressors & generator sets
- Construction & in-plant vehicles
- On/Off-Highway vehicles
- Marine & offshore equipment

Air Cleaner Features

- Easy to service! No tools needed! Usually done in 5 minutes or less!
- Durable plastic housing – corrosion-free and lightweight
- Two-stage air filtration! Built-in, tangential pre-cleaner ahead of primary filter removes up to 85% of incoming dust
- Choose 90° or straight outlet to fit your application
- Easy to fasten latches (no bolts) retain dust cup/cover
- 45° Vacuator™ Valve orientation permits either vertical or horizontal air cleaner mounting (the dust cup can be incrementally rotated to suit specific application)
- Four models have twist-off cover design
- Safety filter protects engine during in-field filter changeouts
- Already tapped to accept filter service indicator (see the Accessories section for indicator options)



Filter Features

- Exclusive Radial Seal Sealing Technology means reliability and easy service – the filter is self-centering and self-aligning!
- One piece, molded urethane endcaps encase the filter media and liners – reducing components, adding reliability and lowering cost



Four models are available with the twist-off cover design

Mounting Bands Designed Exclusively for the FPG Series

Polymer Mounting Band

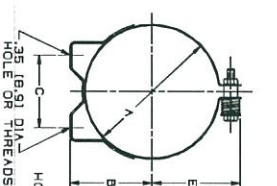
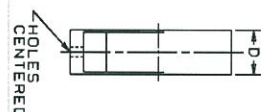
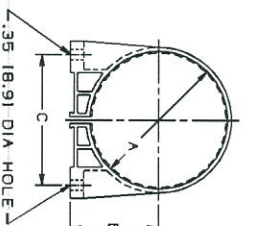
The one-piece, high tech polymer mounting band will securely hold the housing in position. The band has tabs on the inside circumference which fit exactly into notches on the FPG housing.



MEDIUM DUST

The band tightens around the air cleaner when the base of the band is bolted to a support, providing a fixed, stable mounting – even in high vibration applications.

Donaldson polymer bands are completely non-corrosive, lightweight, easy to install, and economical.



Application Note:

To accommodate even hard-to-fit applications, polymer bands allow the air cleaner housings to be rotated and positioned at various increments, depending upon the size:

Housing Diameter	Increment
4.80" (122mm)	11°
5.75" (146mm)	10°
6.74" (171mm)	7.5°
7.19" (183mm)	7°
8.35" (212mm)	5°

WARNING: Do not use any other mounting bands or straps with FPG air cleaners. Use of an unapproved mounting band voids warranty.

Metal Mounting Band

The metal mounting band has a spring-loaded bolt at the top to maintain a constant hold on the housing throughout high and low temperature extremes.

FPG Mounting Bands (Order one band per FPG air cleaner)

(Letters are keyed to drawings above)

Part Number	A		B		C		D		E		Weight lbs kgms	Maximum Belt Torque	
	in	mm	in	mm	in	mm	in	mm	in	mm			
POLYMER BANDS													
P777151	4.80	122	3.09	79	4.56	116	1.57	40	n/a	n/a	0.26	118	11 lbs.-ft 14.8 N•m
P77730	5.75	146	3.52	90	5.35	136	1.99	51	n/a	n/a	0.37	167	11 lbs.-ft 14.8 N•m
P77810	6.79	173	3.94	100	6.00	154	1.99	51	n/a	n/a	0.40	182	11 lbs.-ft 14.8 N•m
P77731	7.17	182	4.11	105	6.50	165	1.99	51	n/a	n/a	0.45	206	11 lbs.-ft 14.8 N•m
P77732	8.35	212	4.70	120	7.48	190	1.99	51	n/a	n/a	0.56	253	11 lbs.-ft 14.8 N•m
P780532 ¹	9.48	241	5.47	136	5.63	143	1.99	51	n/a	n/a			
P780594 ¹	10.55	268	5.90	150	5.63	143	3.15	80	n/a	n/a			
METAL BANDS													
H008442	4.80	122	3.07	78	2.76	70	1.57	40	3.34	85	0.70	317	12 lbs.-ft 16.2 N•m
H008443	5.75	146	3.54	90	3.15	80	1.99	51	3.83	97	1.30	580	12 lbs.-ft 16.2 N•m
H008441 ²	6.79	173	3.94	100	3.54	90	1.99	51	4.35	111	1.40	635	12 lbs.-ft 16.2 N•m
H008444	6.79	173	3.94	100	3.54	90	1.99	51	4.35	111	1.40	635	12 lbs.-ft 16.2 N•m
H002070	7.19	183	4.09	104	3.74	95	1.99	51	4.55	116	1.50	680	12 lbs.-ft 16.2 N•m
H002023	8.13	207	4.72	120	4.33	110	1.99	51	5.14	131	1.60	726	12 lbs.-ft 16.2 N•m

1 - Mounting bands (with spring-loaded screws) for FPG09 and FPG10 models with twist-off cover
2 - Model H008441 has 8mm threads

FPG Air Cleaner



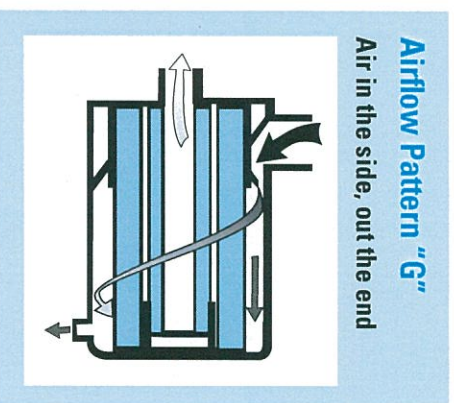
When specifying an Air Cleaner ...

Determine the airflow requirements of your engine, then find the corresponding cfm airflow in the table at right. The restriction numbers (shown in inches of water) indicate the approximate initial restriction of each model air cleaner at that cfm. If there are two air cleaner models that fit your parameters, choosing the one with the lowest restriction will provide longest filter service life. When calculating total initial restriction of the entire air intake system, include the restriction caused by ducting, elbows, pre-cleaners, etc.

Initial Airflow Restriction

Airflow CFM @ 6"H ₂ O	8"H ₂ O	10"H ₂ O	Air Cleaner Model 90° Straight
MODELS WITH PRIMARY FILTER ONLY			
55	65	70	G042545 G042544
80	95	105	G057514 G057513
120	135	155	G065433 G065432
150	170	190	G070020 G070019
205	245	275	G082528 G082527
MODELS WITH PRIMARY & SAFETY FILTER			
65	80	90	G057512 G057511
110	125	145	G065411 G065424
125	145	165	G070018 G070017
165	190	215	G082526 G082525
247	282	314	G100317 ¹
259	297	328	G100319 ¹
265	300	335	G090225 ¹
256	317	346	G090219 ¹

1 - Models with twist-off cover design (no latches)

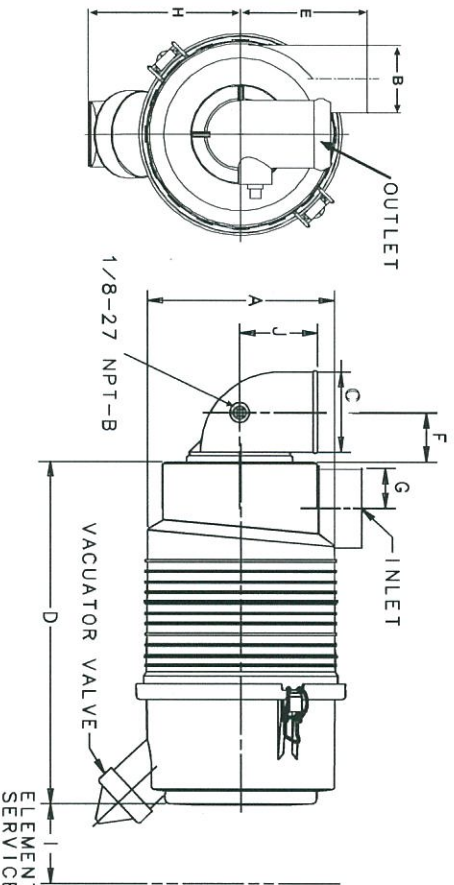


Airflow Pattern "G"

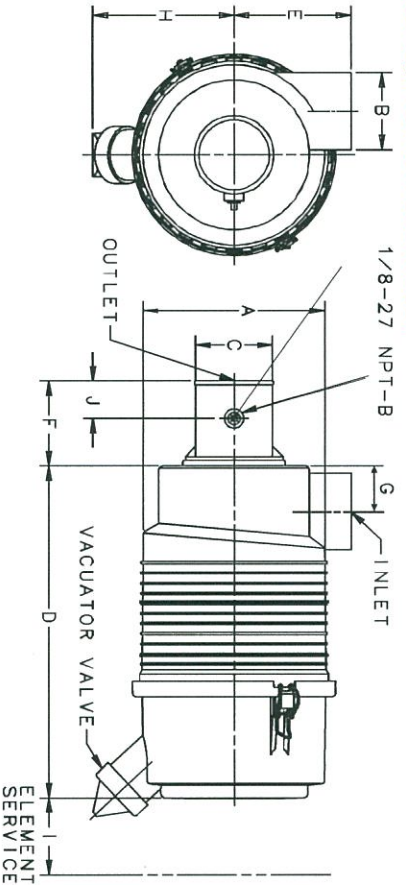
Air in the side, out the end

FPG Specification Illustrations

90° Elbow Outlet Model



Straight Outlet Tube Model



Application Notes

- 1) Safety filters: All FPG models can accept safety filters. This table shows which air cleaner models are shipped with a safety filter installed. If you want to add a safety filter to an existing model that did not originally have one, order the safety filter listed in the Service Parts table on page 34.
- 2) Mounting band specifications and ordering information are on next page.
- 3) Inlet Hoods: A plastic inlet stack up to 18" (457mm) tall may be added, supporting a plastic inlet hood. See the Accessories section for information on optional inlet hoods and filter service indicators. Warning: Do not add a pre-cleaner or any intake accessory other than a lightweight inlet hood. Use of unapproved intake accessories will void your Donaldson warranty.
- 4) Service indicators: See the Accessories section for information on filter service indicators.

FPG Specifications

Air Cleaner Models	with Safety Filter?	Body Dia. (A)	Inlet Dia. (B)	Outlet Dia. (C)	Housing Length (D)	Inlet Height (E)	Outlet Length (F)	Inlet Location (G)	Center Line to Valve(H)	Service Clear. (I)	Weight lbs (J)	Restr. Tap Loc. (J)
MODELS WITH 90° ELBOW OUTLET TUBE												
G042545	no	4.80"	1.75"	1.75"	7.45"	3.27"	1.23"	1.48"	3.96"	5.39"	1.3 lbs	1.94"
		122mm	44mm	44mm	189mm	83mm	31mm	38mm	101mm	137mm	0.6 kg	48mm
G057512	yes	5.75"	2.00"	2.00"	10.87"	3.82"	1.36"	1.65"	4.66"	10.68"	2.5 lbs	2.60"
		146mm	51mm	51mm	276mm	97mm	35mm	42mm	118mm	271mm	1.1 kg	66mm
G057514	no	5.75"	2.00"	2.00"	10.87"	3.82"	1.36"	1.65"	4.66"	7.95"	2.2 lbs	2.60"
		146mm	51mm	51mm	276mm	97mm	35mm	42mm	118mm	202mm	1.0 kg	66mm
G065411	yes	6.74"	2.50"	2.50"	12.61"	4.41"	1.60"	1.70"	5.35"	12.24"	3.9 lbs	3.06"
		171mm	64mm	64mm	320mm	112mm	41mm	43mm	136mm	311mm	1.8 kg	78mm
G065433	no	6.74"	2.50"	2.50"	12.61"	4.41"	1.60"	1.70"	5.35"	8.50"	3.5 lbs	3.06"
		171mm	64mm	64mm	320mm	112mm	41mm	43mm	136mm	216mm	1.6 kg	78mm
G070018	yes	7.19"	3.00"	3.00"	13.09"	4.88"	1.88"	1.72"	5.45"	12.50"	4.3 lbs	3.62"
		183mm	76mm	76mm	332mm	124mm	48mm	44mm	137mm	318mm	1.9 kg	92mm
G070020	no	7.19"	3.00"	3.00"	13.09"	4.88"	1.88"	1.72"	5.45"	8.87"	3.8 lbs	3.62"
		183mm	76mm	76mm	332mm	124mm	48mm	44mm	137mm	225mm	1.7 kg	92mm
G082526	yes	8.35"	3.75"	3.50"	14.23"	5.43"	2.11"	2.11"	6.01"	13.91"	5.8 lbs	4.13"
		212mm	95mm	89mm	361mm	138mm	54mm	54mm	153mm	353mm	2.6 kg	105mm
G082528	no	8.35"	3.75"	3.50"	14.23"	5.43"	2.11"	2.10"	6.01"	9.57"	5.2 lbs	4.13"
		212mm	95mm	89mm	361mm	138mm	54mm	53mm	153mm	243mm	2.3 kg	105mm
G090219 ¹	yes	9.53"	4.50"	3.50"	15.75"	6.69"	2.11"	2.42"	10.44"	12.79"	8.8 lbs	4.13"
		242mm	114mm	89mm	400mm	170mm	54mm	62mm	260mm	325mm	4.0 kg	105mm
G100317 ¹	yes	10.55"	4.50"	4.00"	16.85"	7.28"	2.37"	2.85"	10.60"	13.98"	11.1 lbs	4.72"
		268mm	114mm	102mm	428mm	185mm	60mm	73mm	269mm	355mm	5.1 kg	120mm

MEDIUM DUST
MODELS WITH STRAIGHT OUTLET TUBE

G042544	no	4.80"	1.75"	1.75"	7.45"	3.27"	3.24"	1.48"	3.96"	5.39"	1.3 lbs	1.88"
		122mm	44mm	44mm	189mm	83mm	82mm	38mm	101mm	137mm	0.6 kg	48mm
G057511	yes	5.75"	2.00"	2.00"	10.87"	3.82"	3.25"	1.65"	4.66"	10.68"	2.5 lbs	1.88"
		146mm	51mm	51mm	276mm	97mm	83mm	42mm	118mm	271mm	1.1 kg	48mm
G057513	no	5.75"	2.00"	2.00"	10.87"	3.82"	3.25"	1.65"	4.66"	7.95"	2.2 lbs	1.88"
		146mm	51mm	51mm	276mm	97mm	83mm	42mm	118mm	202mm	1.0 kg	48mm
G065424	yes	6.74"	2.50"	2.50"	12.61"	4.41"	3.23"	1.70"	5.35"	12.24"	3.9 lbs	1.63"
		171mm	64mm	64mm	320mm	112mm	82mm	43mm	136mm	311mm	1.8 kg	41mm
G065432	no	6.74"	2.50"	2.50"	12.61"	4.41"	3.23"	1.70"	5.35"	8.48"	3.5 lbs	1.63"
		171mm	64mm	64mm	320mm	112mm	82mm	43mm	136mm	216mm	1.6 kg	41mm
G070017	yes	7.19"	3.00"	3.00"	13.09"	4.88"	3.26"	1.72"	5.45"	12.50"	4.3 lbs	1.88"
		183mm	76mm	76mm	332mm	124mm	83mm	44mm	138mm	318mm	1.9 kg	48mm
G070019	no	7.19"	3.00"	3.00"	13.09"	4.88"	3.26"	1.72"	5.45"	8.87"	3.8 lbs	1.88"
		183mm	76mm	76mm	332mm	124mm	83mm	44mm	138mm	225mm	1.7 kg	48mm
G082525	yes	8.35"	3.75"	3.50"	14.23"	5.43"	3.27"	2.10"	6.01"	13.91"	5.8 lbs	1.91"
		212mm	95mm	89mm	361mm	138mm	83mm	53mm	153mm	353mm	2.6 kg	49mm
G082527	no	8.35"	3.75"	3.50"	14.23"	5.43"	3.27"	2.10"	6.01"	9.57"	5.2 lbs	1.91"
		212mm	95mm	89mm	361mm	138mm	83mm	53mm	153mm	243mm	2.3 kg	49mm
G090225 ¹	yes	9.53"	4.50"	4.00"	15.75"	6.69"	3.43"	2.42"	10.04"	12.79"	8.7 lbs	2.22"
		242mm	114mm	102mm	400mm	170mm	87mm	62mm	260mm	325mm	3.9 kg	57mm
G100319 ¹	yes	10.55"	4.50"	4.00"	16.85"	7.28"	3.45"	2.85"	10.60"	13.98"	10.9 lbs	2.22"
		268mm	114mm	102mm	428mm	185mm	88mm	73mm	269mm	355mm	4.9 kg	57mm

¹ - Models with twist-off cover design (no latches)

FPG Air Cleaner



FPG Service Parts

G042544 (straight outlet)	
G042545 (90° elbow outlet)	
cover	P533685...8
filter, primary	P822686...3
filter, safety	P535396...4
latch	P538928
Vacuator™ Valve	P522958

G057511 (straight outlet)	
G057512 (90° elbow outlet)	
cover	P533761...8
filter, primary	P821575...3
filter, safety	P822858...3
latch	P538928
Vacuator™ Valve	P522958

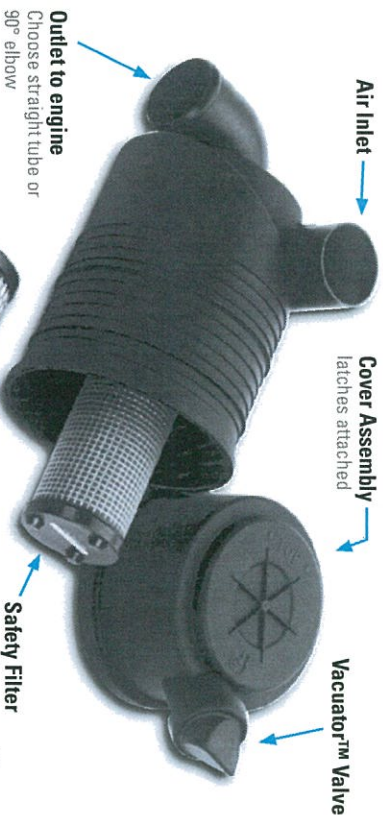
G057513 (straight outlet)	
G057514 (90° elbow outlet)	
cover	P533761...8
filter, primary	P821575...3
filter, safety	P822858...4
latch	P538928
Vacuator™ Valve	P522958

G065411 (90° elbow outlet)	
G065424 (straight outlet)	
cover	P539422...8
filter, primary	P822768...3
filter, safety	P822769...3
latch	P538928
Vacuator™ Valve	P158914

G065432 (straight outlet)	
G065433 (90° elbow outlet)	
cover	P539422...8
filter, primary	P822768...3
filter, safety	P822769...4
latch	P538928
Vacuator™ Valve	P158914

G070017 (straight outlet)	
G070018 (90° elbow outlet)	
cover	P536202...8
filter, primary	P827653...3
filter, safety	P829332...3
latch	P538928
Vacuator™ Valve	P158914

G070019 (straight outlet)	
G070020 (90° elbow outlet)	
cover	P536202...8
filter, primary	P827653...3
filter, safety	P829332...4
latch	P538928
Vacuator™ Valve	P158914



G082525 (straight outlet)	
G082526 (90° elbow outlet)	
cover	P534048...8
filter, primary	P828889...3
filter, safety	P829333...3
latch	P538928
Vacuator™ Valve	P158914

G082527 (straight outlet)	
G082528 (90° elbow outlet)	
cover	P534048...8
filter, primary	P828889...3
filter, safety	P829333...4
latch	P538928
Vacuator™ Valve	P158914

G090219* (90° elbow outlet)	
G090225* (straight outlet)	
filter, primary	P780522
filter, safety	P780523
Vacuator™ Valve	P776008
cover	P780524

G100317* (90° elbow outlet)	
G100319* (straight outlet)	
filter, primary	P781039
filter, safety	P777639
Vacuator™ Valve	P776008
cover	P780528

NOTES:
 3 = Shipped with air cleaner initially
 4 = Safety filter is designed to fit this air cleaner, but was not originally shipped with it (note that adding a safety filter will decrease the maximum airflow throughput)
 8 = Cover assembly includes latches but no Vacuator™ Valve

* = Models with twist off cover design (no latches)