

EDITION 1 / 2014

AUTOMOTIVE BRAND NEWS



THE CORE VALUES ARE WHAT COUNTS



Made in **optibelt**

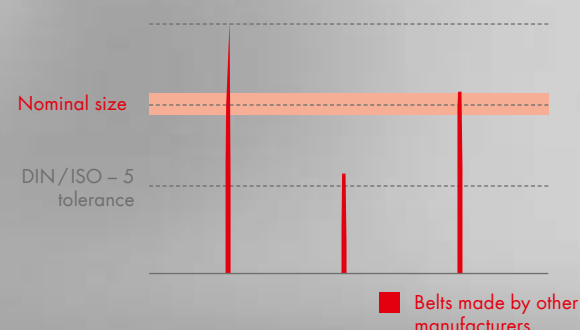
TRUCK POWER MARATHON 2 M=S
TRUCK POWER MARATHON 2 M=S

PERFECTIONISTS RUN LIKE THIS

SET CONSTANT FOR TOP FORM

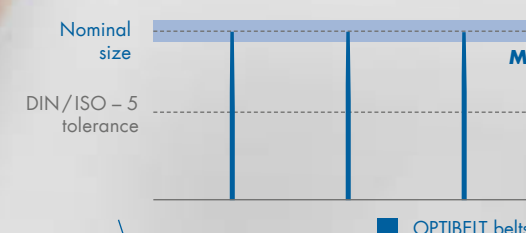


Length tolerances in accordance with the DIN standard require the measurement and assembly of sets.



BEST VALUES

Lorries are long-distance runners. To prevent them from running out of steam half-way, precision work is required when changing the drive belts. And here lies the problem: The length of most belts differ significantly, even if they comply with the DIN standard. When replacing multi-groove drives, therefore, the belts should preferably come from the same batch. Or the tension pulleys must be adjusted precisely to ensure that everything fits. The better solution is: the precision ground **optibelt TRUCK POWER MARATHON 2 M=S**. All of the belts have the same length, can be used in sets without further measurement and are designed to withstand the highest loads. For full power over the full distance.



For use in sets without further measurement:
optibelt TRUCK POWER MARATHON 2 M=S

Doesn't run maintenance-free for long.



Made in **optibelt** **TRUCK POWER MARATHON 2 M=S**
TRUCK POWER MARATHON 2 M=S

IDENTICAL WITHOUT EXCEPTION



LIKE A MIRROR IMAGE

Zero tolerance for length tolerances: The set constant **optibelt TRUCK POWER MARATHON 2 M=S** V-belt is always the nominal size. Thanks to innovative production methods, these precision ground OPTIBELT V-belts can be used in sets without further measurement. The clear advantage: No additional measurement is required and no sets need to be put together. The long service life, reliability and efficiency of the **optibelt TRUCK POWER MARATHON 2 M=S** make it ideal for demanding multi-groove drives. Other notable characteristics are its economic efficiency and optimal operational reliability.

PROFILES

AVX 10; AVX 13; AVP 13

All common profiles / lengths are available



PUSHING THE LIMITS



PHOTO: JOWEL ALCAIDE RUEVA



OPTIBELT SPONSORS THE MALDONADO TEAM



The optibelt **RBK** is in the race with Porsche.

What do rally drivers have in common with the engineers at OPTIBELT? More than you think: Both love great challenges and strive with great concentration to make even the smallest continuous improvements. This is why OPTIBELT supports the Spanish rally driver Manuel Maldonado, who has been active in Spanish rally driving, with speed and skill, since the 1980s. As a private driver, Maldonado has to get by without the generous budget of a works team, but has collected numerous titles, nonetheless. He has won the Andalusian Rally Championship several times (most recently in 2014), has been the Andalusian Hill Climb Champion and is a successful participant in WRC races. Recently, Maldonado has drifted along the ideal line in a Porsche 911 GT3 Carrera. Reliably transmitting the power of a powerful 400 hp six-cylinder engine with sequential gears to the road calls for absolutely reliable drive components. The Maldonado Team and OPTIBELT: simply a winning combination.

PASSION & QUALITY



SIMPLY DRIP DRY

In order to keep on the ball in the automotive OEM market, flawless quality and 100 percent passion are indispensable. Our business partners are aware of these strengths at OPTIBELT and therefore challenge our innovation skills on a regular basis. Take VW, for example: The drive belts of the new VW Golf had to meet strict requirements, namely high performance with low noise, even in wet conditions. The so-called car wash test – a

test carried out under very wet conditions – is used to demonstrate these characteristics. Our engineers drew inspiration from mother nature and created a new lotus-effect rubber mix. Moisture forms beads on this material and simply rolls off, so that the belt dries significantly faster. The car wash test proves it: Noise generation and performance losses are not an issue with the wet slip optimised **optibelt RBK** belt. A super result for OPTIBELT!



START

SO, WHAT IS IT THEN -

WET SLIP OPTIMISED?

“Wet slip optimised” describes a new development from OPTIBELT. For our OEM customers, we developed a ribbed belt that has optimised properties in wet conditions. The customers’ requirements: The belt must pass the car wash test, to demonstrate that it performs well in wet conditions, without making a noise. We have passed the test.



SO, WHAT SPECIFIC ADVANTAGES

DOES THE BELT OFFER?

Compromises in wet conditions are finally a thing of the past. Moisture forms beads on these drive belts and simply rolls off, resulting in low-noise power transmission at all times, even in wet conditions. In other words: A **wet slip optimised belt** does not slip, does not squeak and always ensures optimum performance.

DOES THAT MEAN

THAT STANDARD OPTIBELT BELTS
SQUEAK IN WET CONDITIONS?

Theoretically, yes. All drive belts without this special property could squeak in wet conditions.

SPECIFICALLY:

ARE BELTS WITH
THIS PROPERTY ONLY
AVAILABLE FROM OPTIBELT?

Yes. Drive belts with the “wet slip optimised” quality feature are available exclusively from OPTIBELT.



AS STANDARD?

WET SLIP OPTIMISED

ARE ALL

OPTIBELT

BELTS

The market launch is underway and will be gradually expanded to cover the entire range of ribbed belts. In future, our standard belts will also include this quality feature.

ARE OEM REFERENCES AVAILABLE?

Yes. This belt is used in 1.2 litre engines of VW, Audi, Seat and Skoda vehicles made by the Volkswagen Group.



NASS
SCHLUPF
OPTIMERT

You have the advantage of being able to purchase a new product with an additional **genuine quality feature**. And this is available exclusively from OPTIBELT.

WHAT ADVANTAGES

DO I HAVE AS A DEALER?

IS WET SLIP OPTIMISED

MORE EXPENSIVE THAN THE STANDARD?

Quality has its price – our product has an outstanding price/performance ratio.

ARE THE MAINTENANCE

INTERVALS AFFECTED?

No. The maintenance intervals are the same as for all OPTIBELT high-quality drive belts.

WHAT HAPPENS IF THE

BELT DOES MAKE A NOISE?

“THAT’S
DOES OPTIBELT
OFFER ANY KIND
OF GUARANTEE?
ALL of our products are
subject to strict quality
assurance. If a wet slip
optimised belt does squeak, other faults are more
probably the cause, such as wrongly aligned
pulleys, for example.”

WHAT NEEDS CONSIDERING

WHEN FITTING THE BELTS?

The belts are fitted in the usual way.

END

EVERYTHING YOU EVER
WANTED TO KNOW ABOUT
WET SLIP OPTIMISED ...

FULL WASH CYCLE

OPTIBELT
PUTS IT TO
THE TEST

THE WET SLIP OPTIMISED **OPTIBELT RBK BELT** PASSED THE CAR WASH TEST: THE BEST POSSIBLE PERFORMANCE, NO NOISE DEVELOPMENT, EVEN IN WET CONDITIONS. WE DOCUMENTED THIS TEST SUCCESS WITH A CAR WASH TEST OF A SOMEWHAT DIFFERENT KIND ...



optibelt RBK belt in the hand,
protective mask on – and off we go!
PLEASE DO NOT TRY THIS YOURSELF!

Neither persons nor
drive belts were injured
in this test.



WATCH THE CAR WASH VIDEO

Would you like to watch the entire car wash test
video on our YouTube channel?
www.youtube.com/user/optibeltGmbH

Windbag or wet slip
optimiser?
Only the test will tell ...



The full programme –
including
high-pressure cleaning.



Everything forms beads and rolls off.
Thanks to the lotus effect.



Anyone wanting to pass through here
gets a good scrubbing first.

✓ **DOESN'T SLIP**
✓ **DOESN'T SQUEAK**

INNOVATIVE TECHNOLOGIES MADE BY OPTIBELT

We have been a reliable OEM partner for the international automotive industry for many years. The secret of OPTIBELT's success is the outstanding quality of its products: These are manufactured using precision tools and the highest level of expertise. Strict quality management ensures identically high standards in all of our manufacturing plants, worldwide. Again and again, our passion for technically expedient innovation and maximum precision leads to new solutions that improve operational reliability and cost efficiency.

Our **optibelt RBK made of EPDM**, for example, is particularly dependable in extreme temperatures and severe weather conditions. It performs reliably within a temperature range between -40 and +130°C. This pays dividends, especially where economic aspects are concerned – because downtime is never an option, whatever the season. In short: We are fired up for performance. Today and in the future. Because one thing is certain: The next innovation is already in the pipeline ...



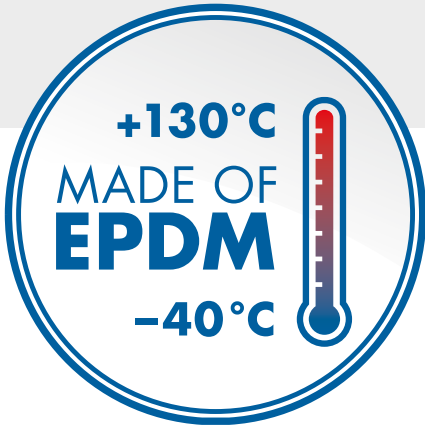
optibelt TRUCK POWER MARATHON 2 M=S
V-BELTS
raw edge, moulded cogged, M=S
for use in sets without further measurement



optibelt TRUCK POWER KBX
KRAFTBANDS
raw edge, moulded cogged



optibelt TRUCK POWER RBK
RIBBED BELTS



FIRED
UP FOR
PERFORMANCE



ANY FURTHER QUESTIONS?

Would you like to find out more about OPTIBELT?
Any questions you may have relating to the company or to our drive solutions will be replied to promptly and personally. Simply send us an email – we appreciate your interest.

marketing@optibelt.com

DID YOU KNOW THAT ...

... IN CHINA
70%
OF CAR SALESPeOPLE
ARE FEMALE?

The picture is completely different in Germany, where as many as 89.5% of salespeople are male.



... THE
PORSCHE CARRERA CUP
RUNS WITH ORIGINAL BELTS
FROM OPTIBELT?

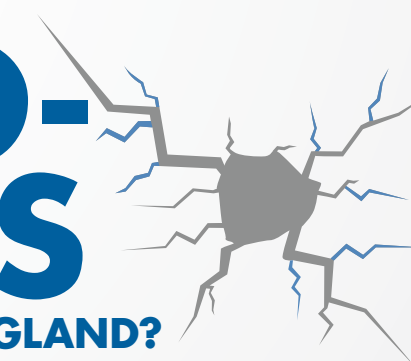
The **Porsche Carrera Cup** has been an integral part of German motorsports for more than 20 years and takes place on courses throughout Germany. This automotive powerhouse relies on custom-designed ribbed belts to ensure top performance and the best transmission.

... THE COMPANY
CARGLASS

Carglass is a protected brand-name in Germany, where the word **Autoglass** would not be eligible for trademark protection. The same applies in reverse to the word **Carglass** in England.

IS CALLED

AUTO-GLASS
IN ENGLAND?



... THE LARGEST
MANUFACTURER OF
CAR TYRES AND WHEELS
IS NOT MICHELIN OR CONTINENTAL,
BUT
LEGO?

Every year, toy manufacturer Lego produces 381 million tyres – each 4.2 inches in diameter.



... THE
POLICE
STILL USED BICYCLES
IN 1898 TO PURSUE
SPEEDERS?

In those days, cars could even be overtaken by bicycles.



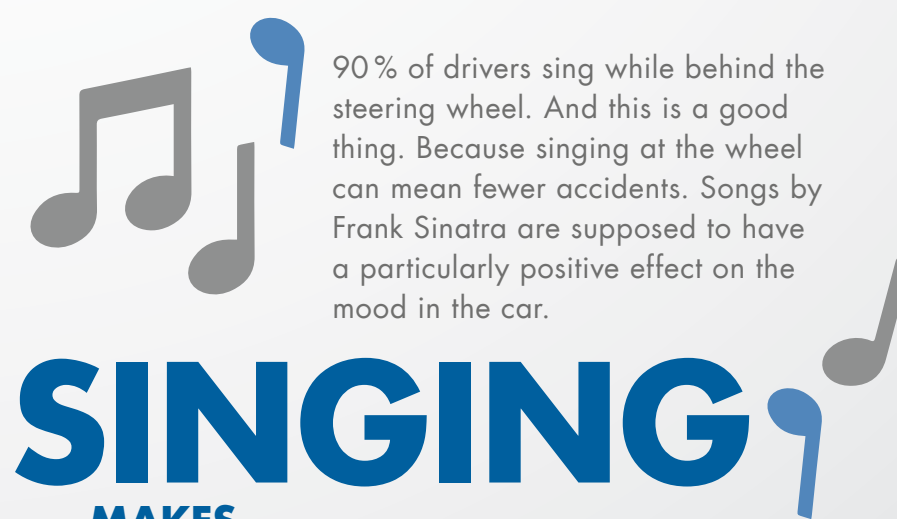
... THE HIGHEST
TRAFFIC FINE
IN THE WORLD AMOUNTED TO
1,000,000\$?

The highest fine for speeding was levied in Switzerland, where fines are calculated in proportion to the person's income. This dubious honour belongs to a Swede, who was caught driving at 290 km/h on a main road.



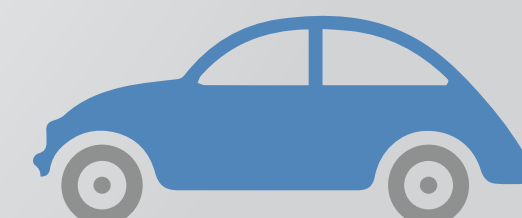
... **SINGING**
MAKES
ROAD TRAFFIC SAFER?

90% of drivers sing while behind the steering wheel. And this is a good thing. Because singing at the wheel can mean fewer accidents. Songs by Frank Sinatra are supposed to have a particularly positive effect on the mood in the car.



... THE
VW BEETLE
HAS BEEN RUNNING
WITH OPTIBELT BELTS SINCE 1950?

A replacement belt used to be provided as standard. It was dispensed with later, however, since it was never actually used.



... TO BE SURE

“Free of charge,
but not
for nothing!”

Michael, 33, mechatronics technician

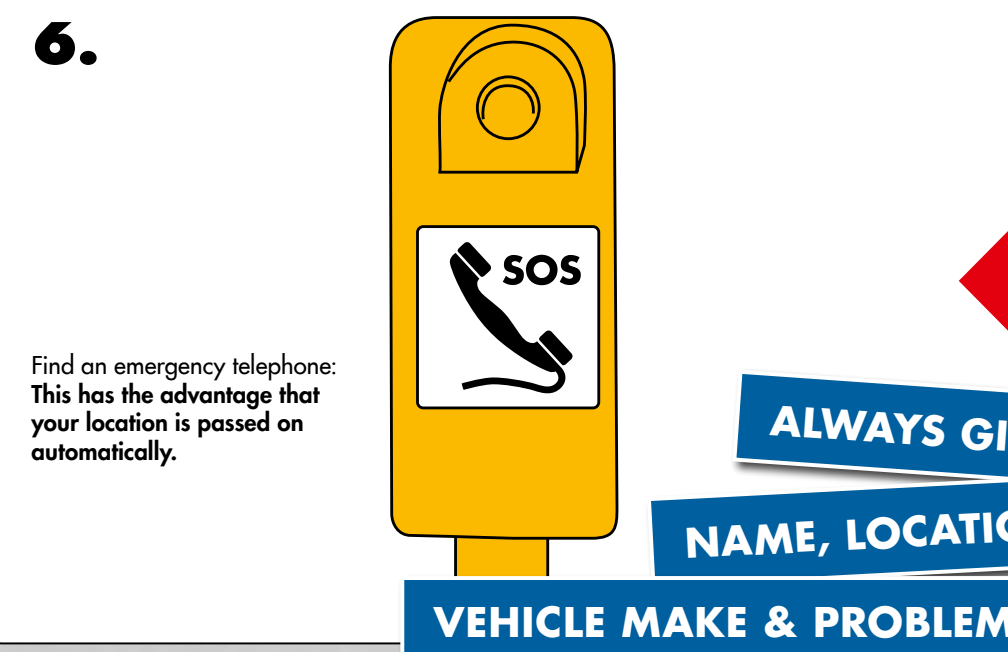
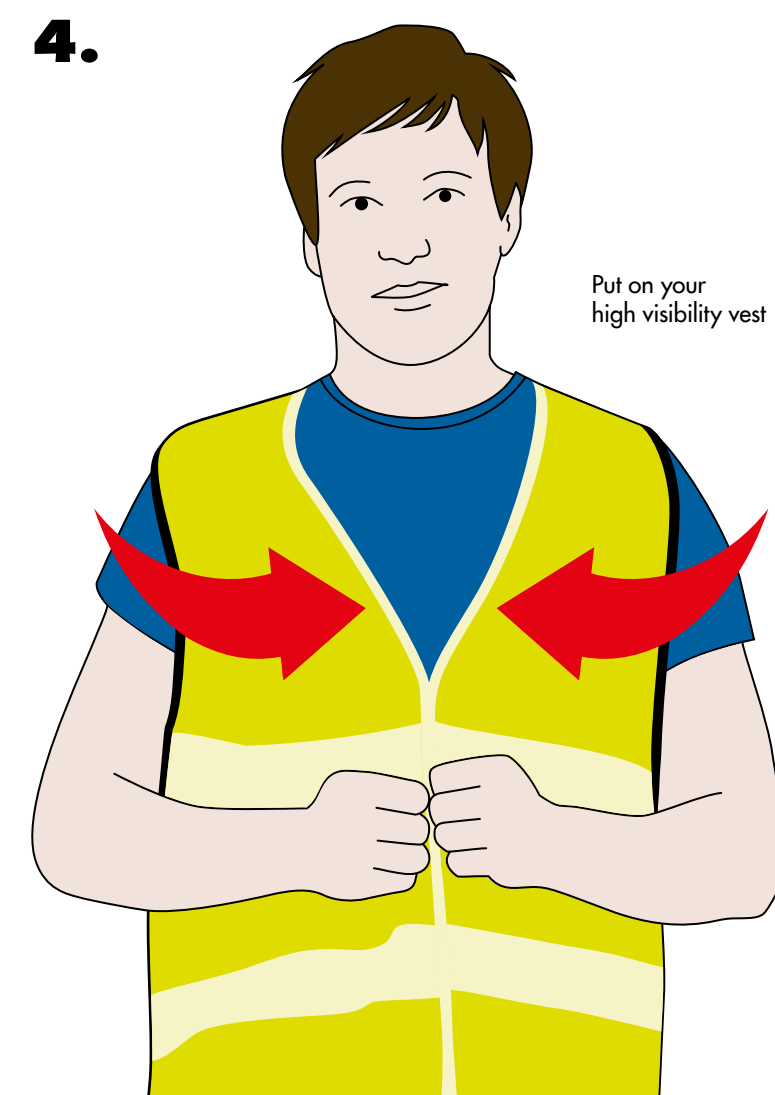
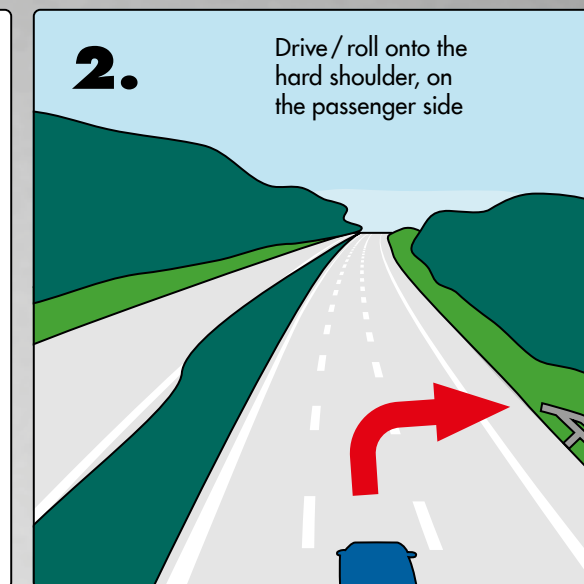
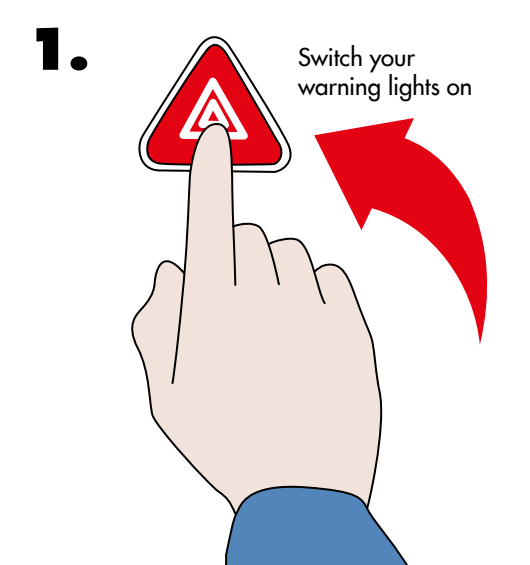
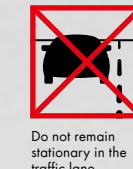
With effect from **1 July 2014**, high visibility vests will be compulsory for cars, lorries and buses in Germany. From this date onwards, at least one high visibility vest must be provided in every vehicle. The regulation is not completely new – it has applied to commercial vehicles since 2007 and most European countries already require that high visibility vests are provided in all vehicles.

High visibility vests certainly make sense, since they increase visibility in emergency situations and help to reduce the risk of consequential accidents. It is still not clear how much drivers in Germany will be fined if caught “topless”. Within Europe, however, fines can be as high as 600 euros.

This is an expense you should avoid – an email to **OPTIBELT** is all it takes. And we will send you a high visibility vest that complies with EN 471, free of charge. **TO BE SURE!**

**AVAILABLE NOW:
HIGH-VIS VEST
FREE OF
CHARGE**

NEVER GO WITHOUT: THE OPTIBELT HIGH-VIS VEST, IN COMPLIANCE WITH EN 471! REQUEST YOURS NOW. SEND AN EMAIL TO MARKETING@OPTIBELT.COM (REFERENCE: HIGH-VIS VEST) AND YOU WILL BE SAFE ON THE ROADS – FREE OF CHARGE.



OR

**ALWAYS GIVE YOUR:
NAME, LOCATION,
VEHICLE MAKE & PROBLEM**

ALWAYS PROPERLY

FITTED

HEAVY METAL – OUR VERY BEST

Anything but a one-hit wonder: **optibelt SUR** tension and guide idler pulleys have become an enduring fixture in car engines. The **SUR** range includes classics, such as fixed eccentric tension idlers, through to modern systems with hydraulic or mechanical damping. The highest quality standards ensure optimal operating tension and guidance of the timing belts. With these pulleys, the maintenance interval requirements are met with ease, and malfunctions in the sensitive engine controls are prevented. Not only does this sound good – it is good.



GO TO THE
ASSEMBLY VIDEO



optibelt MT-A II

**FOR THE SAFE
AND PROFESSIONAL
INSTALLATION OF
ELASTIC OPTIBELT EPK
RIBBED BELTS**

AVAILABLE NOW!

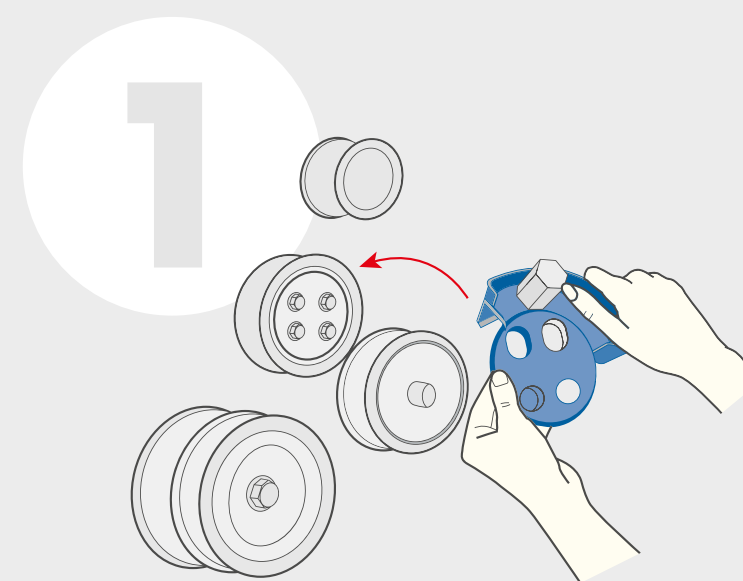
CHANGE FASTER WITH MTA-II

The **optibelt EPK** elastic ribbed belts do not require belt tensioners. And this makes proper installation even more important. With the **optibelt MT-A**, you have a multi-purpose tool to hand that can be used for many different types of vehicles and replaces a number of the costly special tools sold by car manufacturers. The **optibelt MT-A II** mounting tools are specially designed for fitting belts in Volvo and Ford engines.

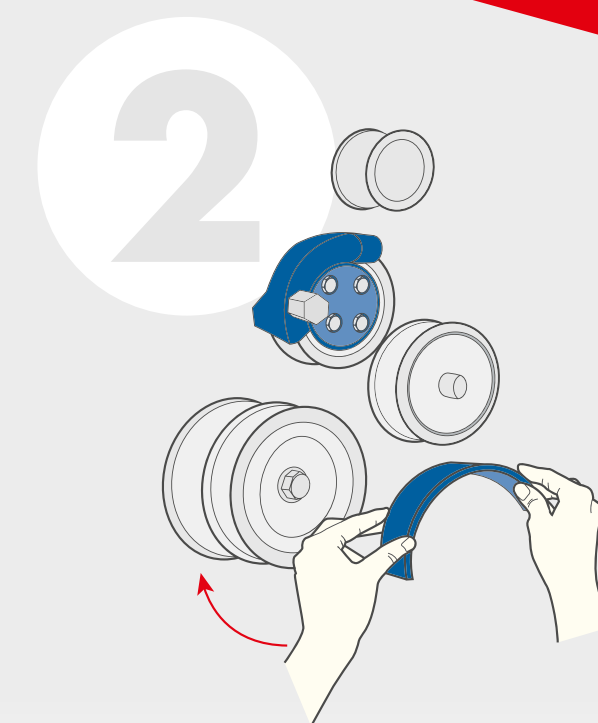
The **MT-A II** comes in a sturdy plastic box with instructions for use. The elastic **EPK** ribbed belts are fitted quickly and professionally. All professional workshops that need to be equipped for the new generation of belts and their special installation requirements would be well advised to acquire these tools.

SERVICE TOOLS

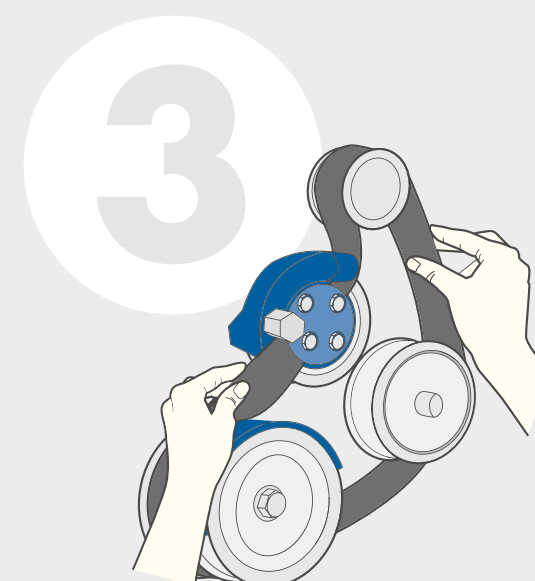
WORKSHOP TIPS



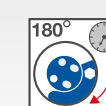
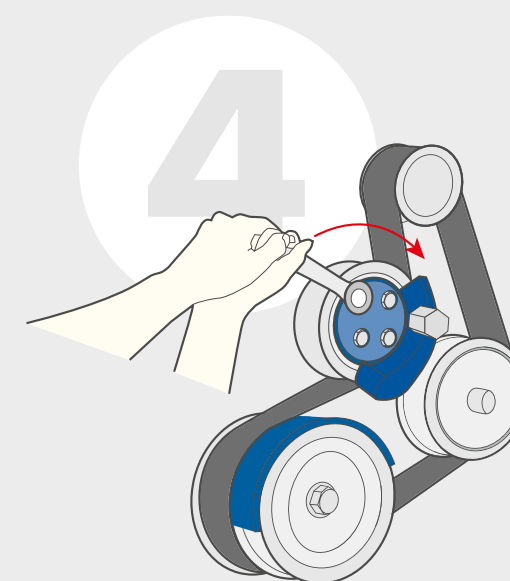
FIT THE TOOL
• Engage the gear.



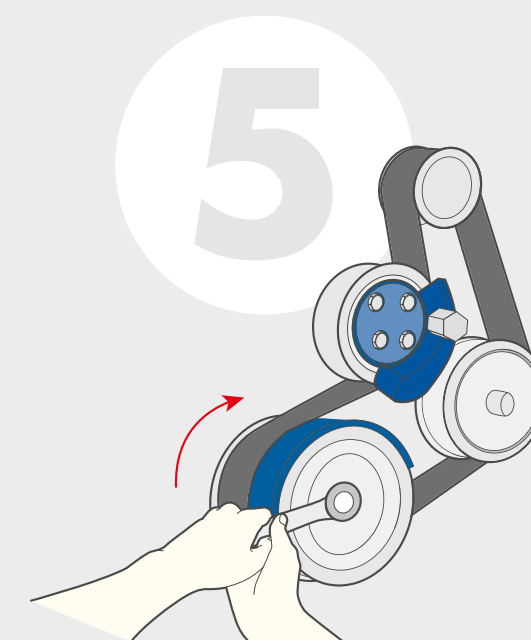
FIT THE TOOL
• With the groove towards the motor.
• Align horizontally.



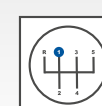
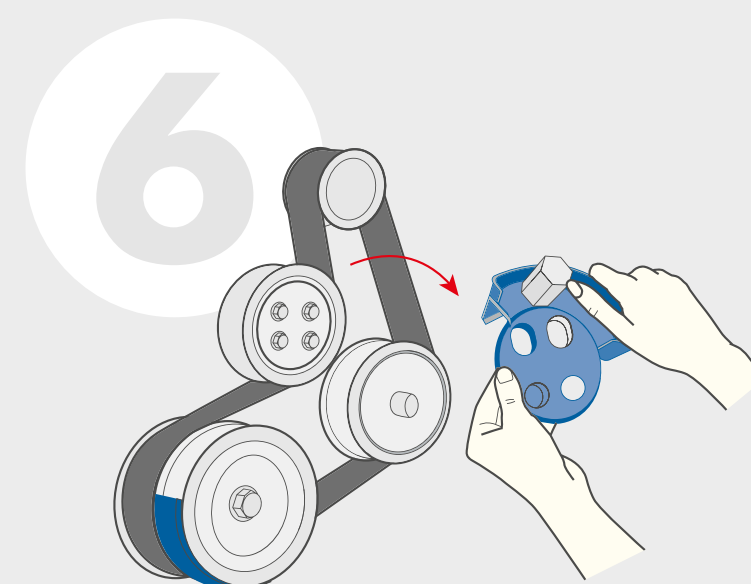
POSITION THE BELT
• Pass the belt under the tool.



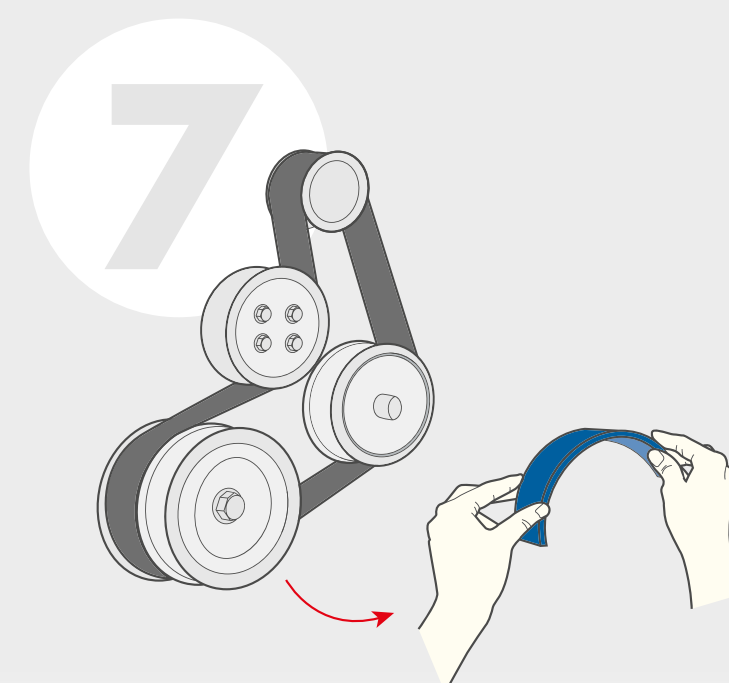
FIX THE TOOL IN PLACE
• Turn the tool, together with the pulley, clockwise through 180°.
• Then disengage the gear.



FIX THE TOOL IN PLACE
• Turn the motor shaft clockwise through approximately 90°.
• The gear is NOT engaged.

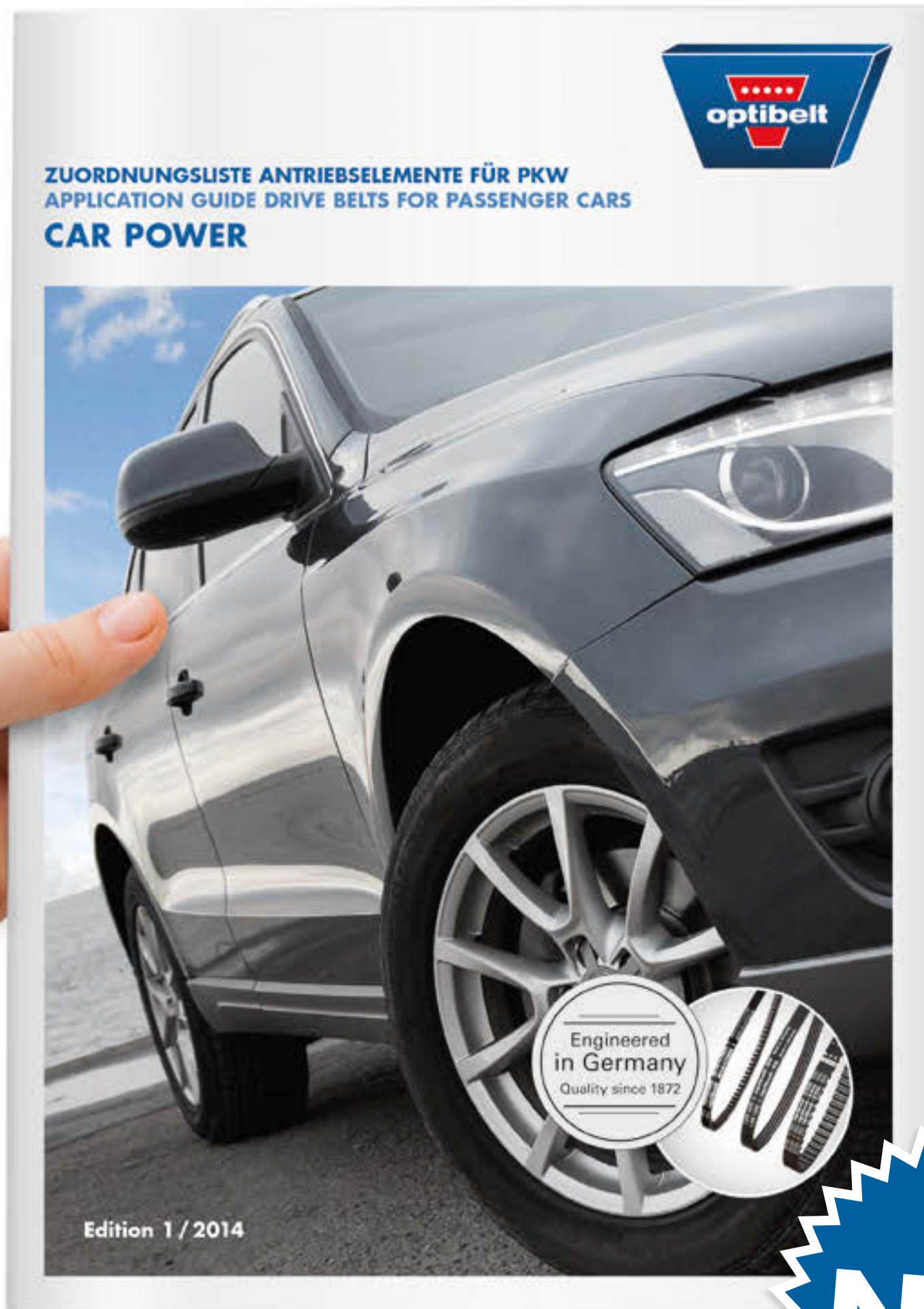


REMOVE THE TOOL
• The gear is engaged.



REMOVE THE TOOL
• Turn the tool clockwise through 180°.
• Then disengage the gear.

IT KNOWS THEM ALL



THE NEW OPTIBELT REFERENCE CATALOGUES ARE READY.

The new OPTIBELT reference catalogues for cars and commercial vehicles will be available shortly. Our OPTIBELT car catalogue, with around 1,300 pages, provides you with the latest information on cars. The new OPTIBELT commercial vehicles catalogue brings you 600 pages of information regarding commercial vehicles. Call us and reserve your catalogues!

NEW